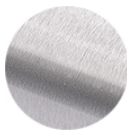
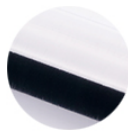


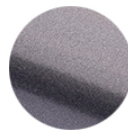
AVAILABLE FINISHES



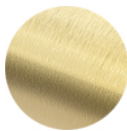
BRUSHED
STAINLESS



POLISHED
STAINLESS



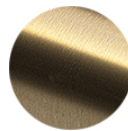
GUNMETAL
GREY



BRUSHED
BRASS



POLISHED
BRASS



ANTIQUÉ
BRASS



SUNSET
COPPER



OIL RUBBED
BRONZE



MATTE
BLACK

CUSTOM COLORS ARE AVAILABLE BY REQUEST

DIMENSIONS

(D) DIAMETER	2.00"
(WT) WALL THICKNESS	0.05"

Tubing is available in 2', 4', 6', 8', and 12' sections. Radius work and custom cuts available upon request.

INSTALLATION

1. Cut tubing to the correct length for your bar. To cut **Brass Tubing**, use either a hacksaw or a powered radial arm saw. To cut **Stainless Steel Tubing**, use a powered radial arm saw with a carbide tip blade.
2. Loosely assemble the tubing with the brackets.
3. If you have multiple tubes, use splicing sleeves to join them together.
4. Secure the loose tubing to the brackets with set screws.

For full instructions, visit our blog post: **Planning & Installing Bar Foot Rails**

Care and maintenance of bar foot rail varies by finish. Given the nature of the product, typical wear and tear may be noticed with your bar rail over time, such as scuffs, scratches, and dirt. Visit kegworks.com/bar-rail-care to read our guide on how to properly prep, clean & maintain all bar rail finishes.